



29 November 2021

Please help us by sharing this information with your community.

New COVID-19 exposure locations in South Australia

New COVID-19 exposure locations have been added since last week.

Remember to regularly check the SA Health website for an up-to-date list of locations where positive cases of COVID-19 have been in South Australia. You can find the locations here: www.sahealth.sa.gov.au/COVIDcontacttracing.

If you were at one of the locations at the same date and time, you may have been exposed to COVID-19 and you must follow the relevant health advice found on our website.

You may not always receive a call, SMS or email from SA Health to let you know if you have been at one of the locations, but you still must follow the health advice even if you have not been contacted.

Update for entry into South Australia

From 29 November, several entry conditions for South Australia have changed.

With the emergence of the Omicron Variant all *international travellers* and people arriving from *High Risk locations* from within Australia arriving into South Australia, or International travellers transiting through another port directly to South Australia, must now **undertake 14 days quarantine**.

Vaccinated persons who travel to South Australia from *low risk* and *moderate risk* areas must now provide evidence of a negative COVID-19 test result received in 72 hours prior to arrival in SA.

The requirements for *close contacts* of a person diagnosed with COVID-19 in the past 7 days, and *cross-border communities*, have also changed.

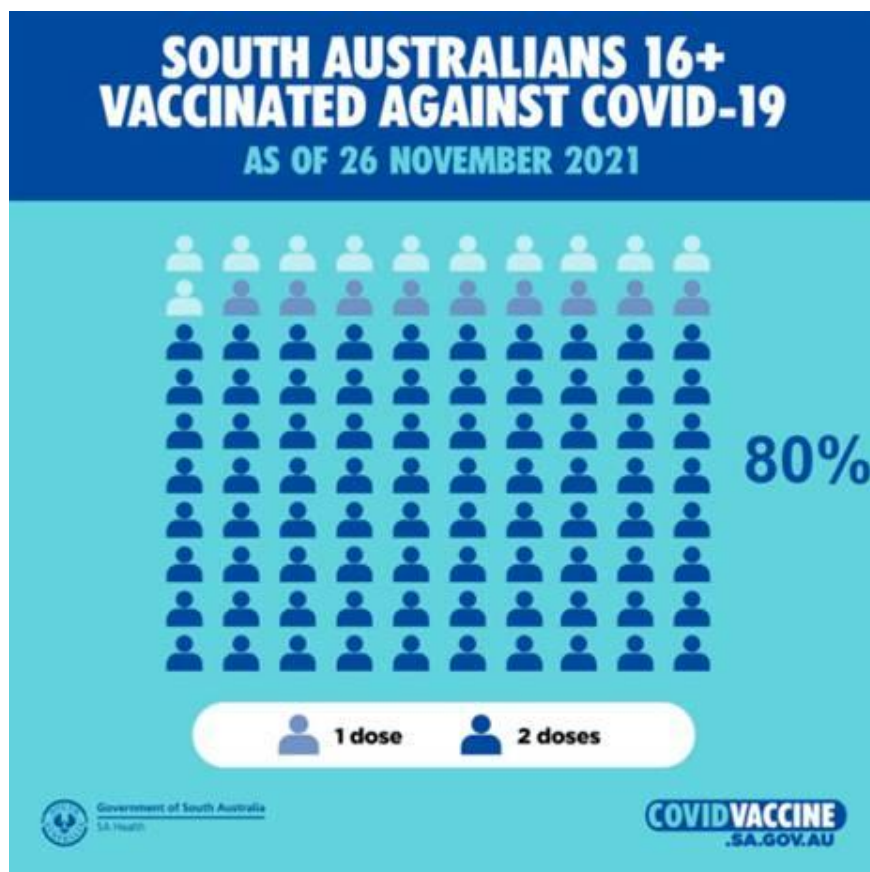
A summary of the changes is available from the [SA Police Facebook page](#). Further information on the entry conditions for arrivals into South Australia are available at www.covid-19.sa.gov.au/travel.

THANK YOU! 80% of South Australians fully vaccinated

Well done, South Australia! More than 80% of people aged 16+ have now received two doses of a COVID-19 vaccine. Thank you for doing what you can to keep yourself, your loved ones and your community safe.

Going forward, SA Health will start reporting the vaccine uptake for people aged 12 years and older.

If you or members of your community haven't yet been vaccinated, walk in to one of SA Health's COVID-19 vaccination clinics or book an appointment at www.sahealth.sa.gov.au/covidvaccine.



Vaccination requirement for returning SA residents

Returning South Australian residents who have had one dose of a COVID-19 vaccine can enter SA before 14 December 2021 by applying for an exemption through [EntryCheck SA](#).

Applicants must upload evidence of a first dose of COVID-19 vaccine and booking confirmation for a second dose. Any entry conditions will be advised in the exemption approval email.

After 14 December 2021, returning South Australian residents will need to have had a two doses of a COVID-19 vaccine to enter SA.

For more information, visit www.covid-19.sa.gov.au/travel/entrycheck-sa.

Testing for COVID-19

If you have any COVID-19 symptoms, no matter how mild, please seek testing as soon as possible. Find your nearest testing site at www.sahealth.sa.gov.au/COVIDtesting. Online bookings are available at some sites to save you time.

Testing sites at [Victoria Park Pakapakanthi](#) and [Ridgehaven](#) are open 24 hours a day, 7 days a week.

GET TESTED FOR COVID-19

sahealth.sa.gov.au/covidtesting

Government of South Australia
SA Health

- FEVER OR CHILLS
- COUGH
- LOSS OF TASTE OR SMELL
- SORE THROAT
- TIREDNESS (FATIGUE)
- RUNNY OR BLOCKED NOSE
- SHORTNESS OF BREATH (DIFFICULTY BREATHING)
- NAUSEA, VOMITING OR DIARRHOEA
- HEADACHE
- MUSCLE OR JOINT PAIN
- LOSS OF APPETITE

COVID-19 vaccinations in pharmacies

Around 300 community pharmacies in South Australia currently offer COVID-19 vaccinations.

At a community pharmacy, you can receive your first, second or booster doses of a COVID-19 vaccine. Pfizer, Moderna and AstraZeneca vaccines are offered (according to availability).

Visit www.sahealth.sa.gov.au/covidvaccine to book your vaccination appointment at a pharmacy near you, or to find a vaccination clinic in your area.

You can find more COVID-19 information on our [website](#) and on [Facebook](#) or [Twitter](#).

www.covidvaccine.sa.gov.au
www.sahealth.sa.gov.au/COVIDmulticultural



Government of South Australia
SA Health